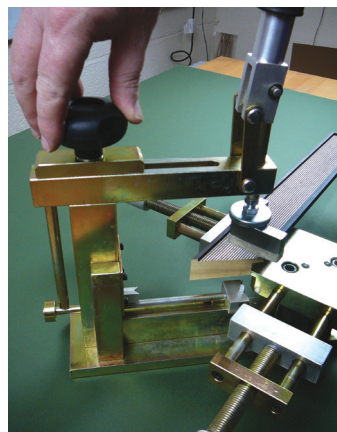


Ideal underpinner for high-quality low volume framing.

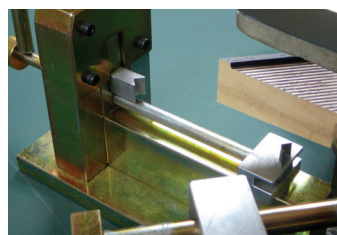
It is precision engineered in steel and aluminium, and each is carefully assembled by hand in UK.

Your mitred mouldings are individually clamped in the smooth face jaws and each piece can be adjusted to ensure perfect alignment.



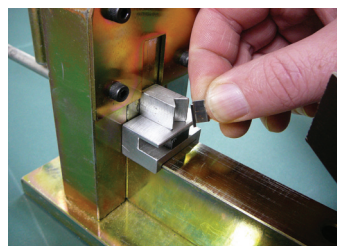
*Loosen knob and adjust insert position of wedge*

The pressure head is adjusted to place the wedge in your chosen position. Wedges should be positioned roughly 1/3 and 2/3 across the line of the join. They should be approx half the height of the wood at the point of insertion.

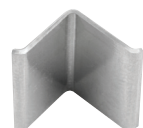


*Check position of pressure pad*

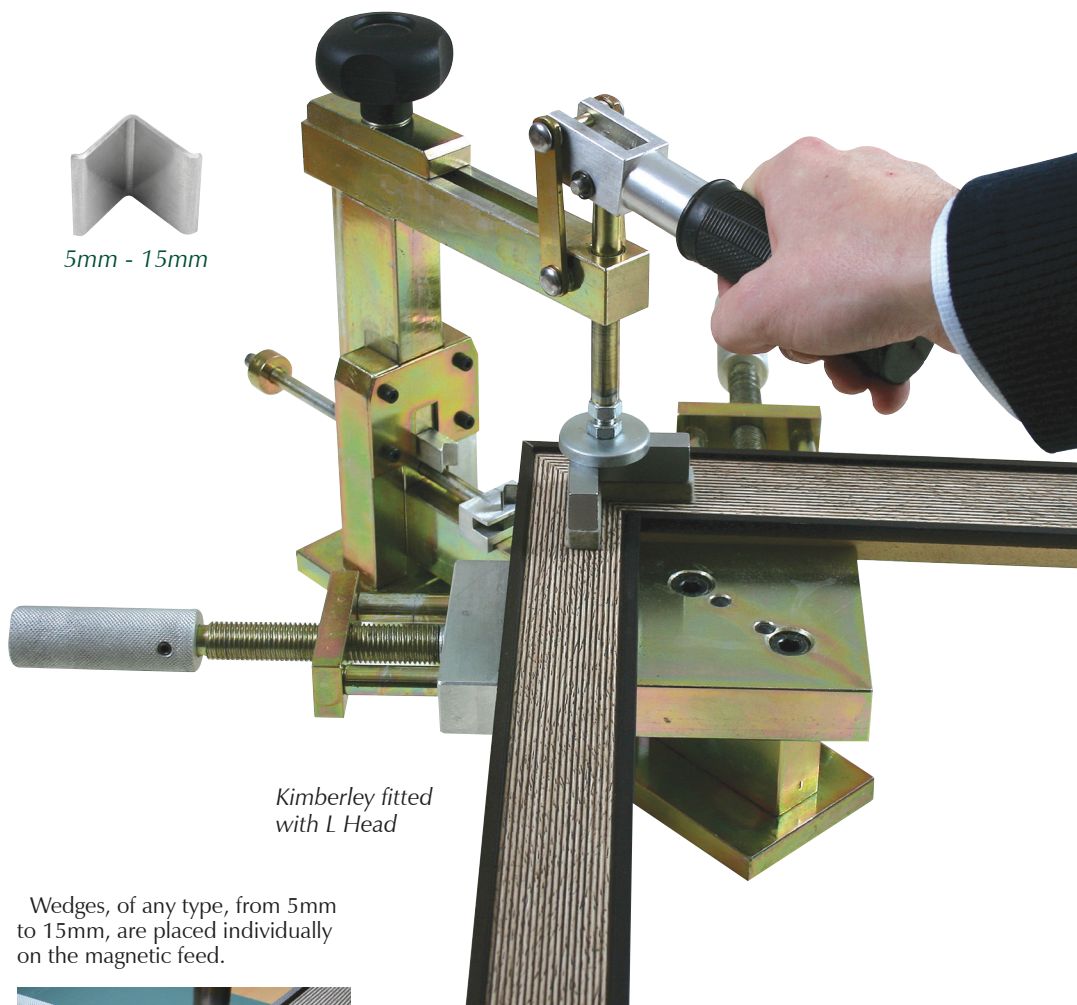
The Kimberley has a unique feature which ensures that the wedge position from below always exactly corresponds to the plunger position above.



*Select suitable wedge and place sharp edge up on the feed tip*

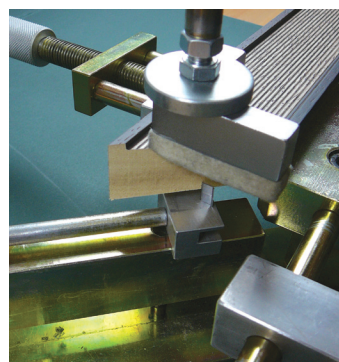


*5mm - 15mm*



*Kimberley fitted with L Head*

Wedges, of any type, from 5mm to 15mm, are placed individually on the magnetic feed.



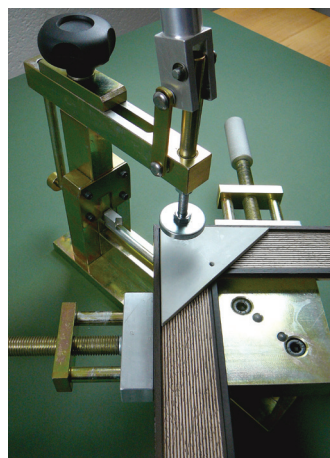
*Wedge is squeezed into the moulding as you pull down the handle*

Kimberley has a magnetic face on the plunger, onto which sits a felt faced L-shaped pressure pad. The hard felt protects the finish on your mouldings.

When joining taller mouldings, the L-shaped head can be removed and replaced with the simple triangular aluminium plate, which protects the moulding surface.

Adjust for one corner and it is all ready for the other three.

A pull down on the handle gently squeezes the wedge up into the moulding.



*Aluminium triangle works better on some mouldings*

Takes mouldings with base widths up to 75mm / 3".

Maximum moulding heights:

With L-Head: 48mm / 2".

With Aluminium Triangle: 70mm / 2.75".

Kimberley is 435mm / 17" wide, 380mm / 15" front to back and 260mm / 10.5" tall with handle folded.

Weight is 10.5kg / 23lb. It is easily carried and stored in a cupboard.

For best results, make up three small blocks from scrap wood, each about 82mm / 3.2" tall. These are used on your worktable to support the corners of larger frames as they are joined.

**2518 KIMBERLEY £ 259-50**

*Price correct at Jan 2012. Please check before ordering.*